

Application

- It can be used to transfer clean or slightly dirty water or other liquids similar to water in physical and chemical properties. It is suitable to be immersed in water for lifting water from the well or the pool, and draining water from the basement.

Pump

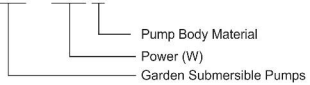
- Stainless steel pump body
- Float switch ensures automatic cut-in and cut-out
- Max. liquid temperature: +35°C
- Max. immersion depth: 7 m
- Max. diameter of particle: 5 mm

Motor

- Motor with aluminum winding
- Built-in thermal protector
- Insulation class: F
- Protection class: IPX8

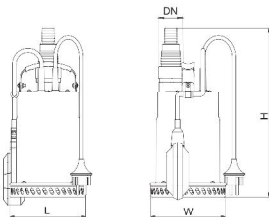
Identification Codes

XKS - 250 S



Technical Data

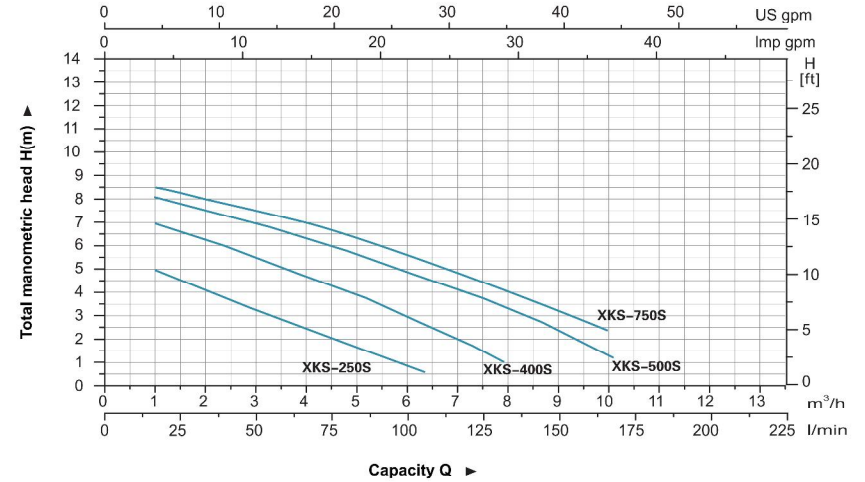
MODEL	POWER		Q (m ³ /h) Q (l/min)	H (m)							
	W	HP		2	4	6	8	10	12		
XKS-250S	250	0.3	33	4	2.5	-	-	-	-	-	
XKS-400S	400	0.5	62	6.2	4.8	3	-	-	-	-	
XKS-500S	500	0.7	75	7.5	6.3	4.8	3.3	-	-	-	
XKS-750S	750	1	88	8	7	5.7	4.2	2.3	-	-	



Dimension

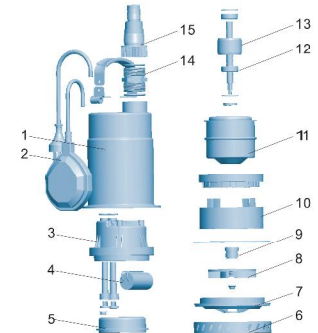
Model	DN	L (mm)	W (mm)	H (mm)
XKS-250S	32	151	151	323
XKS-400S		151	151	323
XKS-500S		151	151	331
XKS-750S		151	151	347

Hydraulic Performance Curve



Materials Table

No.	Part	Material
1	Pump cover	AISI 304
2	Float switch	
3	Upper cover	PP
4	Capacitor	
5	Upper plate	ZL102
6	Pump base	AISI 304
7	Diffuser	PP
8	Impeller	PPO
9	Mechanical seal	Carbon/ceramic
10	Pump support	ABS
11	Stator	
12	Ball bearing	
13	Rotor	
14	Connector	PP
15	Connector	PP



Package Information

Model	GW (Kgs)	L (mm)	W (mm)	H (mm)	Quantity (PCS/20 TEU)
XKS-250S	4.8	200	150	300	2632
XKS-400S	5.2	200	150	300	2632
XKS-500S	6.2	200	150	300	2632
XKS-750S	7.8	205	155	345	2160

Application

- It can be used to transfer dirty water or other liquids similar to water in physical and chemical properties. It is suitable to be immersed in water for lifting water from the well or the pool, and draining water from the basement.

Pump

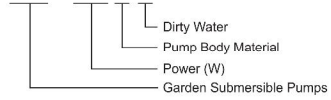
- Stainless steel pump body
- Float switch ensures automatic cut-in and cut-out
- Max. liquid temperature: +35°C
- Max. immersion depth: 7 m
- Max. diameter of particle: 35 mm

Motor

- Motor with aluminum winding
- Built-in thermal protector
- Insulation class: F
- Protection class: IPX8

Identification Codes

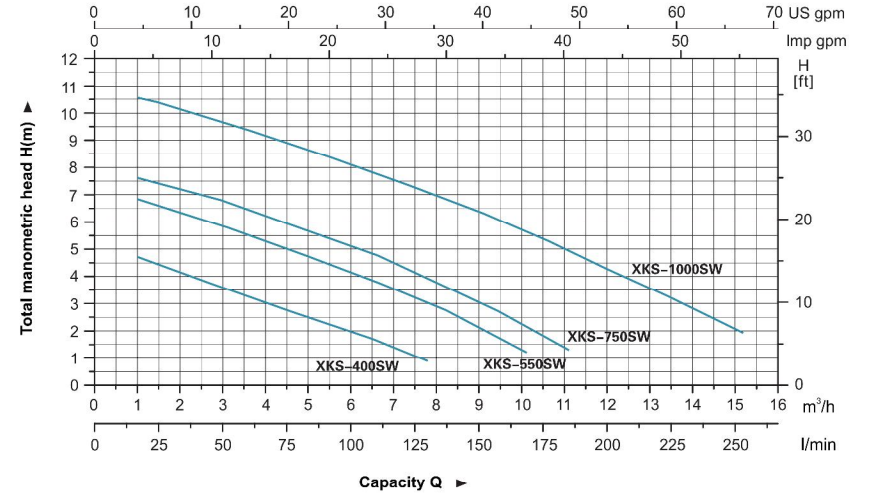
XKS - 400 S W



Technical Data

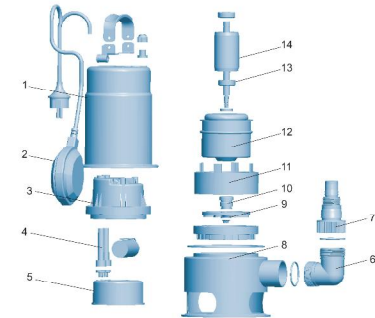
MODEL	POWER		Q (m ³ /h)	H (m)							
	W	HP		Q (l/min)	2	4	6	8	10	12	
XKS-400SW	400	0.5	H (m)	4.2	6.7	100	133	167	200	-	
XKS-550SW	550	0.7		3.2	5.3	4.2	3	-	-	-	
XKS-750SW	750	1		7.3	6.3	5.2	3.8	2.2	-	-	
XKS-1000SW	1000	1.3		10.2	9.2	8.1	7	5.7	4.3	-	

Hydraulic Performance Curve



Materials Table

No.	Part	Material
1	Pump cover	AISI 304
2	Float switch	
3	Upper cover	PP
4	Capacitor	
5	Upper plate	ZL102
6	Connector	PP
7	Connector	PP
8	Pump body	AISI 304
9	Impeller	PPC
10	Mechanical seal	Carbon/ceramic
11	Pump support	ABS
12	Stator	
13	Ball bearing	
14	Rotor	

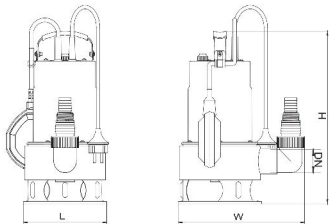


Package Information

Model	GW (Kgs)	L (mm)	W (mm)	H (mm)	Quantity (PCS/20 TEU)
XKS-400SW	5.7	210	165	350	1968
XKS-550SW	6.4	210	165	350	1968
XKS-750SW	7	210	165	350	1968
XKS-1000SW	8.6	215	170	355	1888

Dimension

Model	DN	L (mm)	W (mm)	H (mm)
XKS-400SW	40	165	248	340
XKS-550SW		165	248	340
XKS-750SW		165	248	351
XKS-1000SW		165	248	370



Application

- This pump is mainly used for use in traditional wells, water deposits and collection tanks. Also suitable for small scale irrigation systems.

Pump

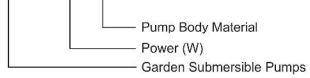
- AISI 304 pump body
- Very high head with multistage-impeller design
- Max. liquid temperature: +35°C
- Max. immersion depth: 7 m
- Max. diameter of particle: 1 mm

Motor

- Motor with aluminum winding
- Built-in thermal protector
- Insulation class: F
- Protection class: IPX8

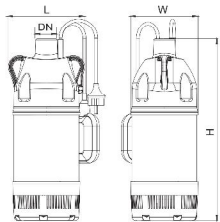
Identification Codes

XKS - 900 S



Technical Data

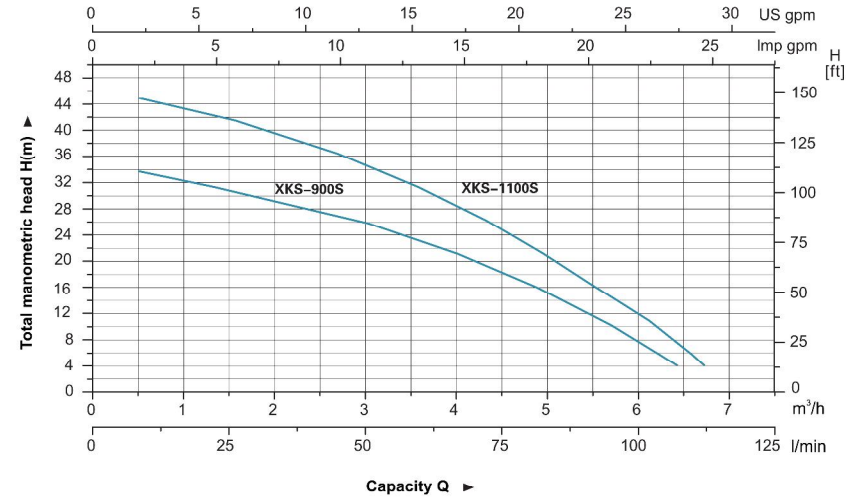
MODEL	POWER (P ₂)		Q (m ³ /h)	Q (l/min)												
	W	HP		0.5	1	1.5	2	2.5	3	3.5	4	4.5	5	5.5	6	6.5
XKS-900S	900	1.2	H	34	32	31	29	27.5	266	23.5	21	18	15	12	8	3.5
XKS-1100S	1100	1.5	H	45	43	42	39	37	35	32	29	25	21	16.1	12	7



Dimension

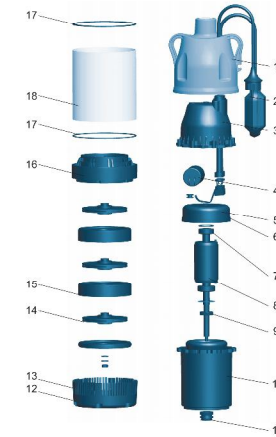
Model	DN	L (mm)	W (mm)	H (mm)
XKS-900S	25	170	150	404
XKS-1100S		170	150	428

Hydraulic Performance Curve



Materials Table

No.	Part	Material
1	Pump cover	PP
2	Float switch	
3	Cover	PP
4	Capacitor	
5	Upper plate	ZL102
6	O-ring	NBR
7	Bearing	
8	Rotor	
9	Oil seal	
10	Stator	
11	Mechanical seal	Carbon/ceramic
12	Base	PA66
13	Filter screen	AISI 304
14	Impeller	PPO
15	Discharge cover	PPO
16	Diffuser	PPO
17	Seal ring	NBR
18	Pump body	AISI 304



Package Information

Model	GW (Kgs)	L (mm)	W (mm)	H (mm)	Quantity (PCS/20 TEU)
XKS-900S	9.9	245	190	455	1380
XKS-1100S	11	245	190	480	1104